



## Immunofixation electrophoresis film analysis

Detailed information on scanning, storing and analyzing the films can be found in the **Protein electrophoresis film analysis quick guide**.  
Visit ([www.hellabio.com/HellabioScann](http://www.hellabio.com/HellabioScann) software).

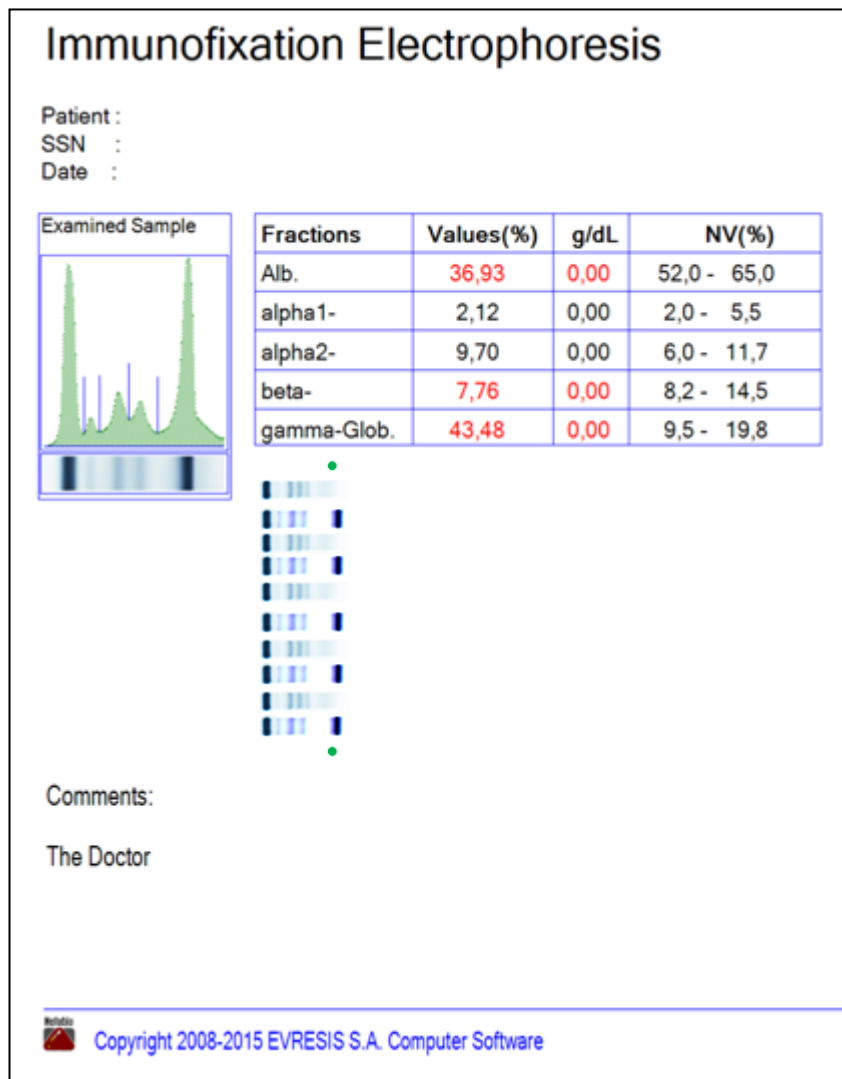
### Immunofixation electrophoresis protocol creation

After completion of the film analysis, the user can **Save** and **Print** the IFE protocol (**Fig. 1**). **Caution!** HellabioScan software is automatically inserting the image of the **electropherogram** into the protocol (**Fig. 2**)

The screenshot shows the HellabioScan software interface. At the top, there are input fields for Patient, SSN, and Date. The Type dropdown menu is set to 'Immunofixation' and is highlighted with a red box. Below this is a Comments text area. In the center, there is a 'Sample Result Image' showing a green electropherogram with several peaks. To the right of the image are buttons for 'PrintPreview', 'Print', and 'Save'. The 'Print' and 'Save' buttons are highlighted with red boxes. Below the image area is a table with the following data:

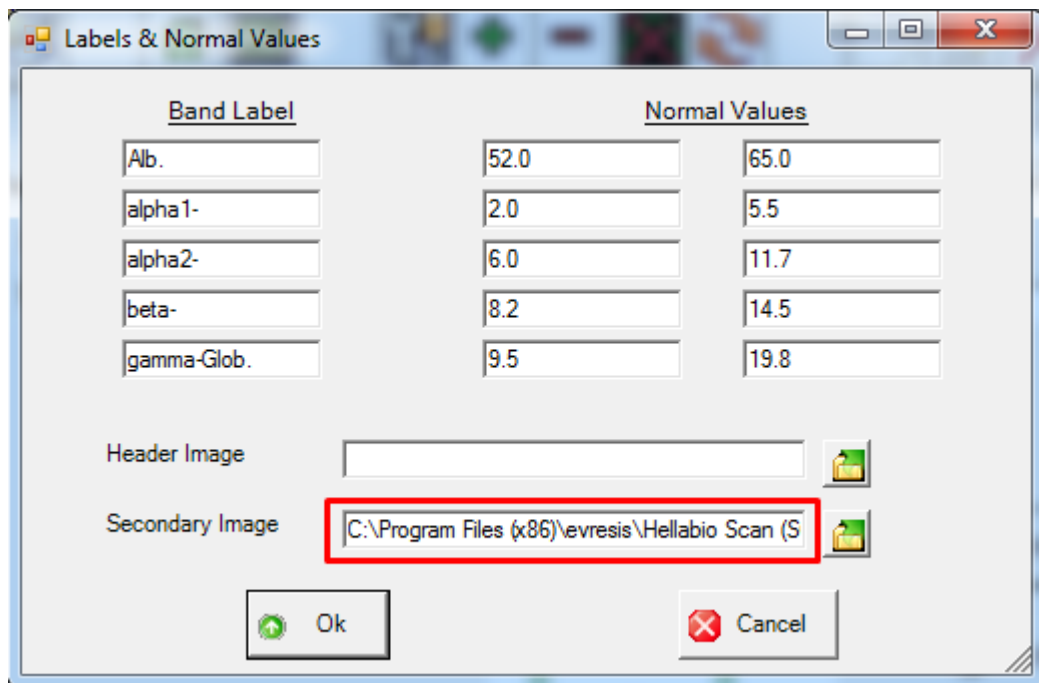
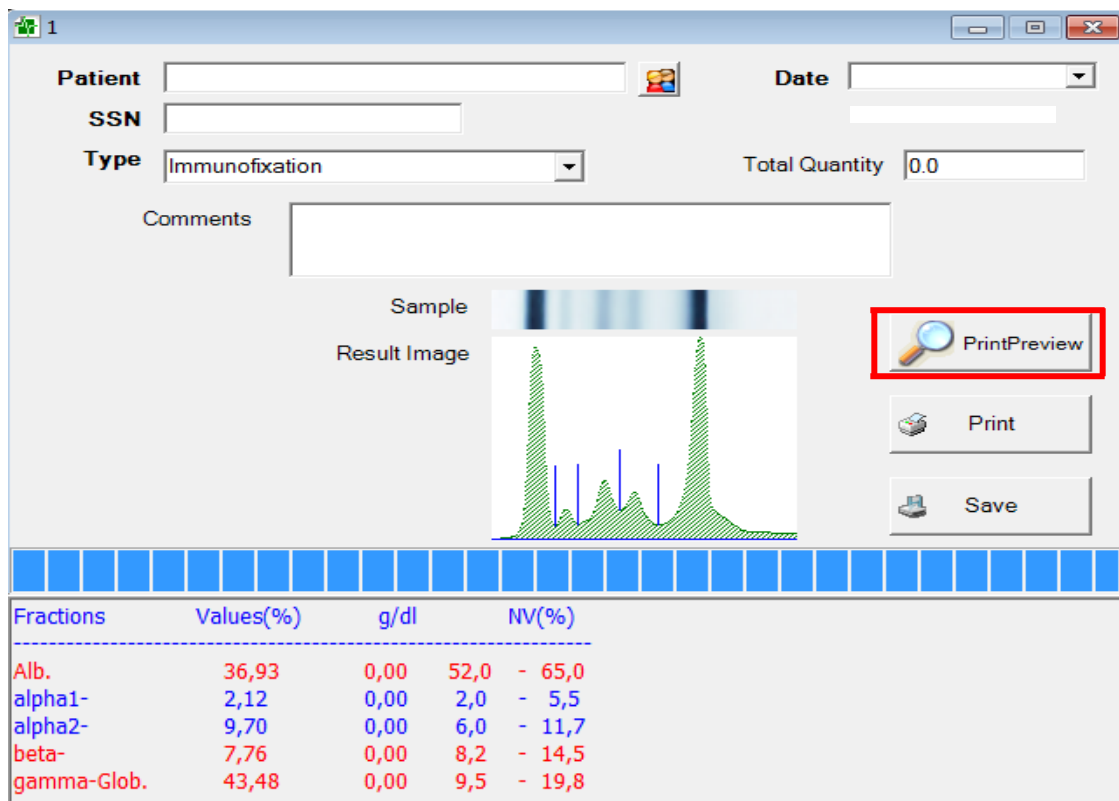
Fractions	Values(%)	g/dl	NV(%)
Alb.	36,93	0,00	52,0 - 65,0
alpha1-	2,12	0,00	2,0 - 5,5
alpha2-	9,70	0,00	6,0 - 11,7
beta-	7,76	0,00	8,2 - 14,5
gamma-Glob.	43,48	0,00	9,5 - 19,8

Fig. 1

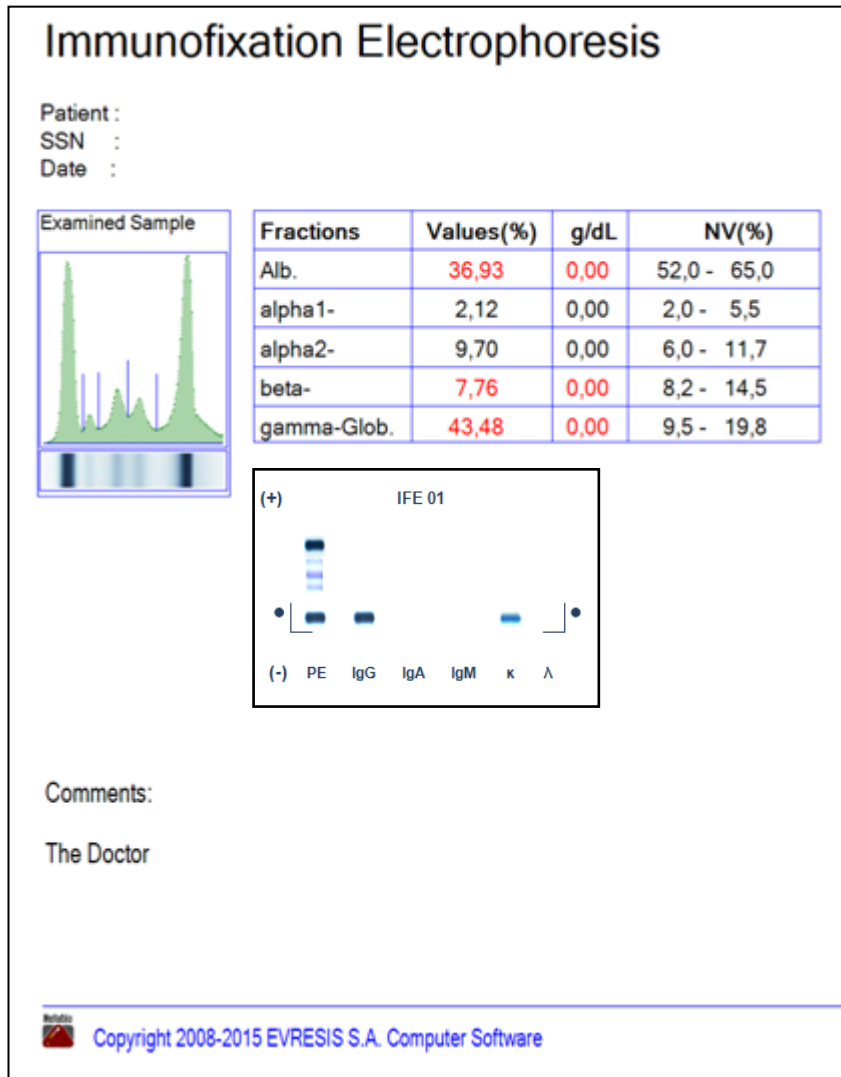


**Fig. 2 Caution! Serum protein electrophoresis scanned film**

For inserting the picture of the **Immunofixation electrophoresis film** into the protocol, the user must first scan or take a photo and save it to a folder of his choice. Recommended folder **C: →program files (X86)→evresis→ HellabioScan(SQL) → create a folder and name it (e.g. IFE pictures)**. After saving the image, the user can complete the creation of the IFE protocol (**Fig. 3**)



**Fig. 3 Example: C: →program files (X86)→evresis→ HellabioScan(SQL) → IFE pictures → Picture 1**



Immunofixation electrophoresis protocol. The picture outline is for training purpose.

Alternatively the user can print the protocol without displaying the IFE image (Fig. 4)

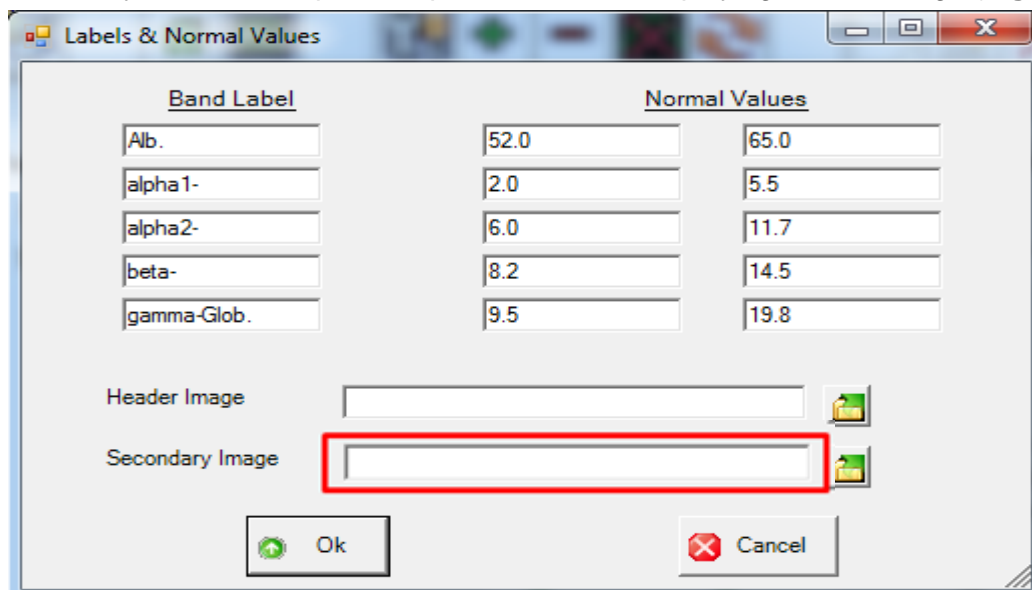
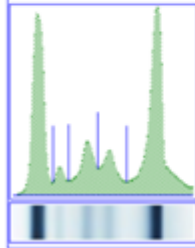


Fig. 4 Blank **Secondary Image** window.

## Immunofixation Electrophoresis

Patient :  
SSN :  
Date :

Examined Sample



Fractions	Values(%)	g/dL	NV(%)
Alb.	36,93	0,00	52,0 - 65,0
alpha1-	2,12	0,00	2,0 - 5,5
alpha2-	9,70	0,00	6,0 - 11,7
beta-	7,76	0,00	8,2 - 14,5
gamma-Glob.	43,48	0,00	9,5 - 19,8

Comments:

The Doctor



Copyright 2008-2015 EVRESIS S.A. Computer Software

Immunofixation electrophoresis protocol

*If you need further assistance or have any questions related to the HellabioScan program, please do not hesitate to contact our team.*

**Email:** [hellabio@hellabio.com](mailto:hellabio@hellabio.com) &  
[hellabio@thermokoitida.gr](mailto:hellabio@thermokoitida.gr)